

## E1.S 4TS2-P

### HIGHLIGHT FEATURES



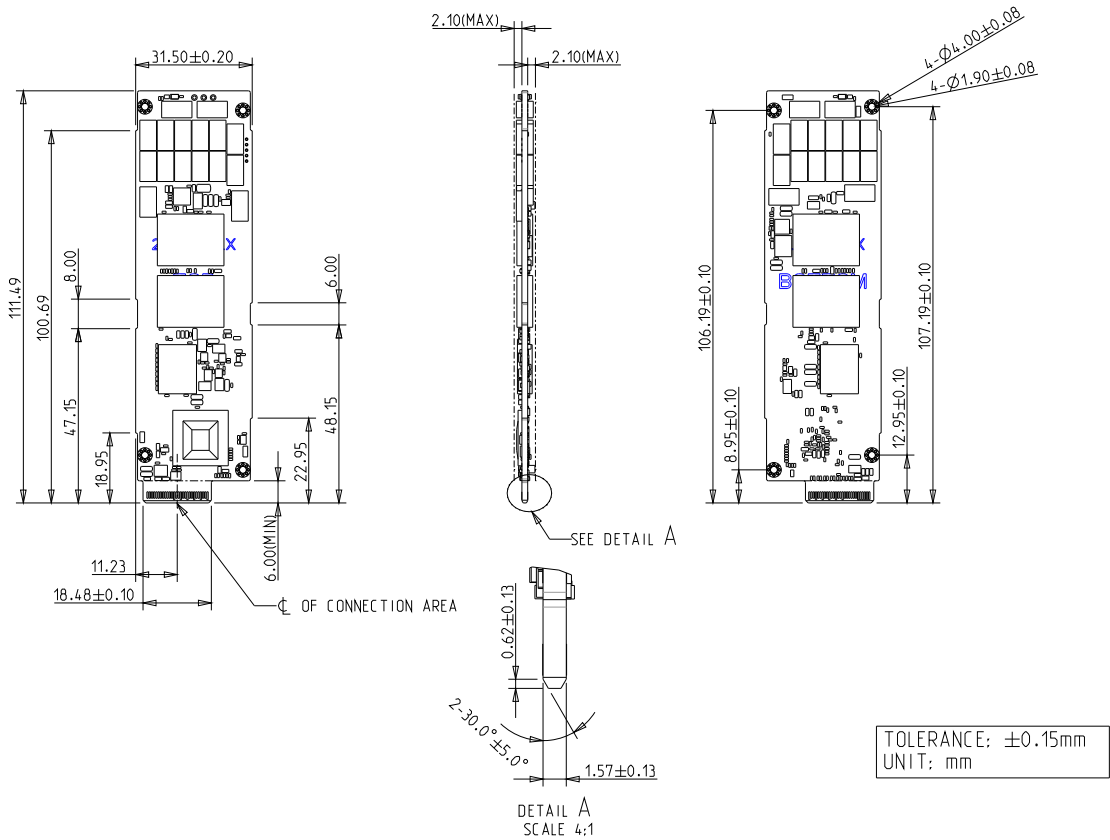
- PCIe Gen 4 x4, NVMe 1.4
- PLP (iCell) technology for power loss protection
- Stable sustained performance
- LDPC ECC engine supported
- Dynamic thermal management

### SPECIFICATIONS

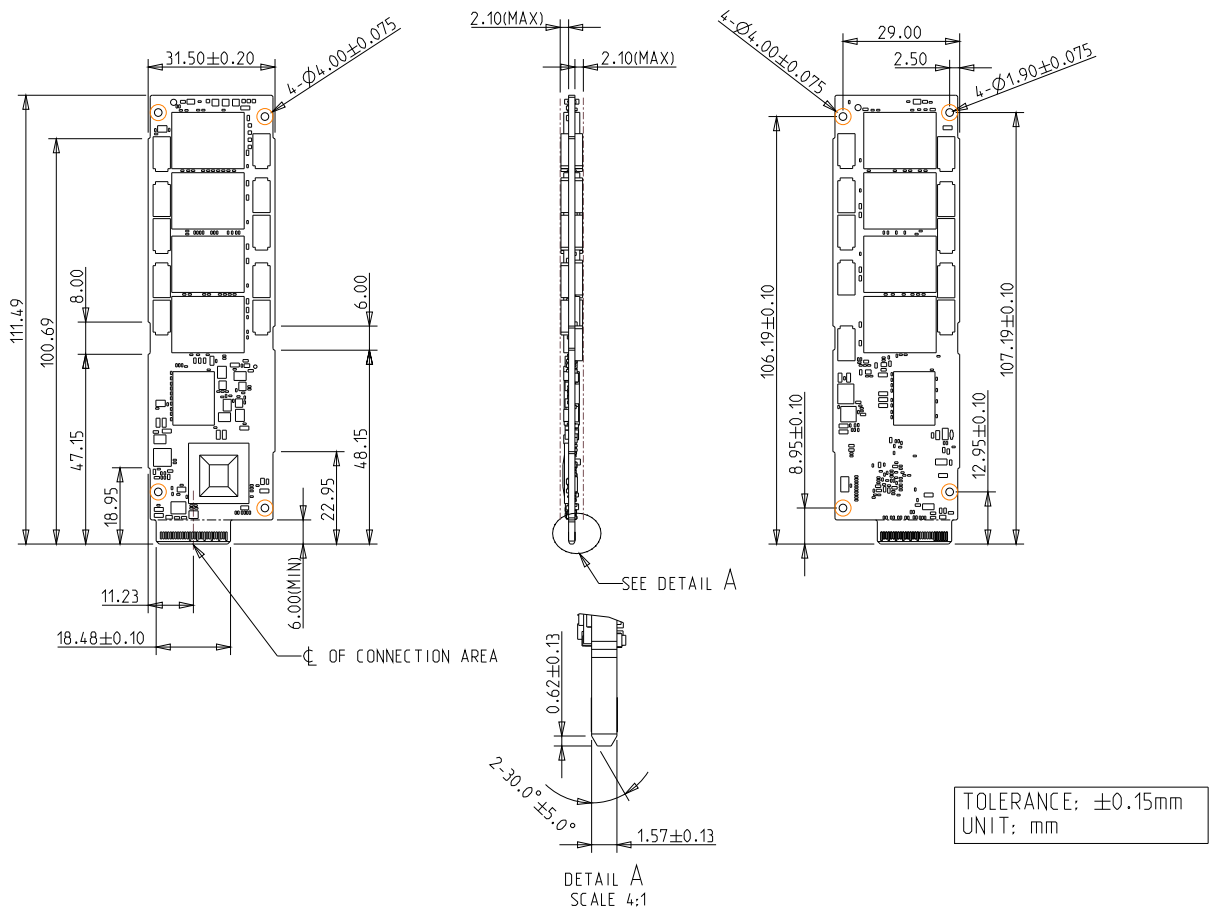
<b>Model Name</b>	E1.S 4TS2-P
<b>Flash Type</b>	3D TLC
<b>Interface</b>	PCIe Gen 4 x4
<b>Form Factor</b>	E1.S
<b>Capacity</b>	400GB ~ 6.4TB
<b>Sequential R / W (MB/sec, max.)</b>	6,900 / 4,650
<b>P/E Cycle</b>	3,000
<b>TBW (Max.)</b>	9,400
<b>Storage Temperature</b>	-40°C ~ 85°C
<b>Max. Power Consumption</b>	12.4W
<b>Max. Channels</b>	8
<b>External DRAM Buffer</b>	Y
<b>H/W Write Protect</b>	N
<b>S.M.A.R.T.</b>	Y
<b>AES</b>	Y
<b>TCG Opal</b>	Y
<b>Dimension (W x L x H/mm)</b>	5.9mm : 31.5 x 111.5 x 5.9 9.5mm : 33.75 x 118.75 x 9.5 15mm : 33.75 x 118.75 x 15.0
<b>Vibration</b>	20G@[7 ~ 2000Hz]
<b>Shock</b>	1500G@0.5ms
<b>MTBF</b>	>3 million hours
<b>Warranty</b>	5 Years

# DIAGRAM

## 5.9mm (400GB ~ 3.2TB)

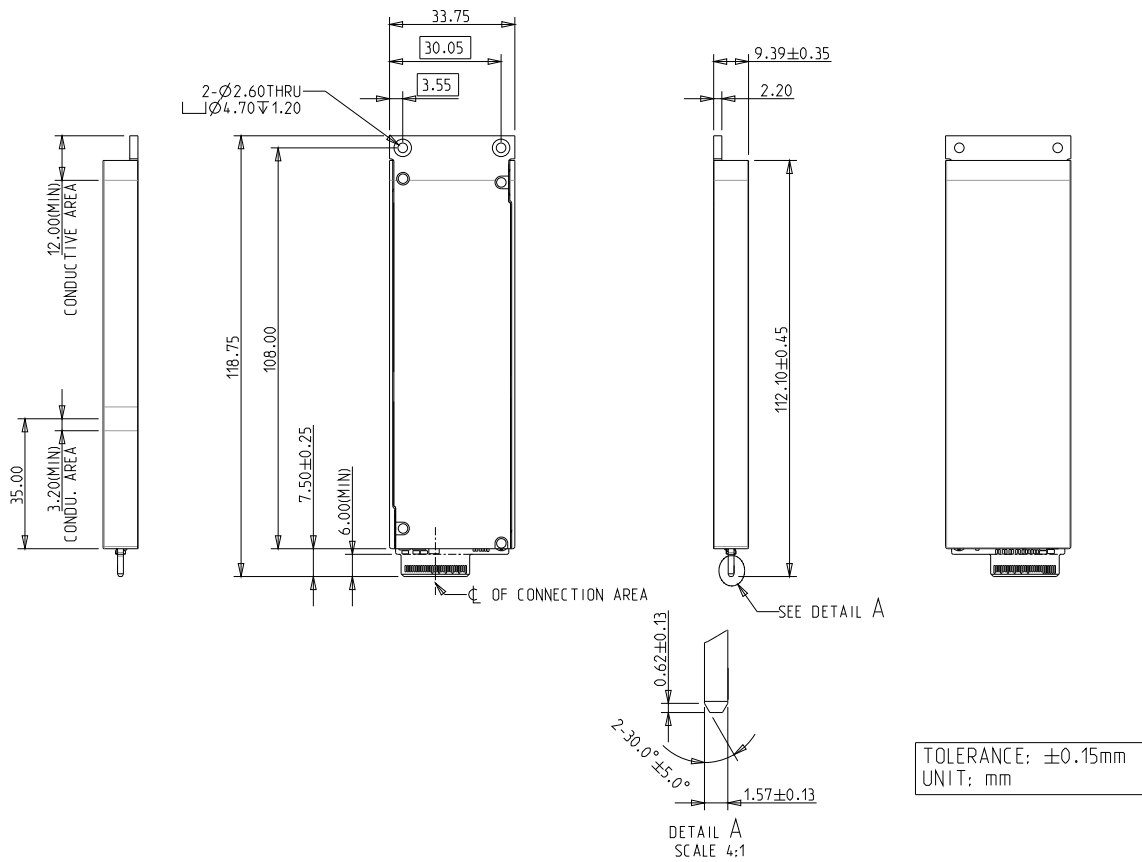


## 5.9mm (6.4TB)

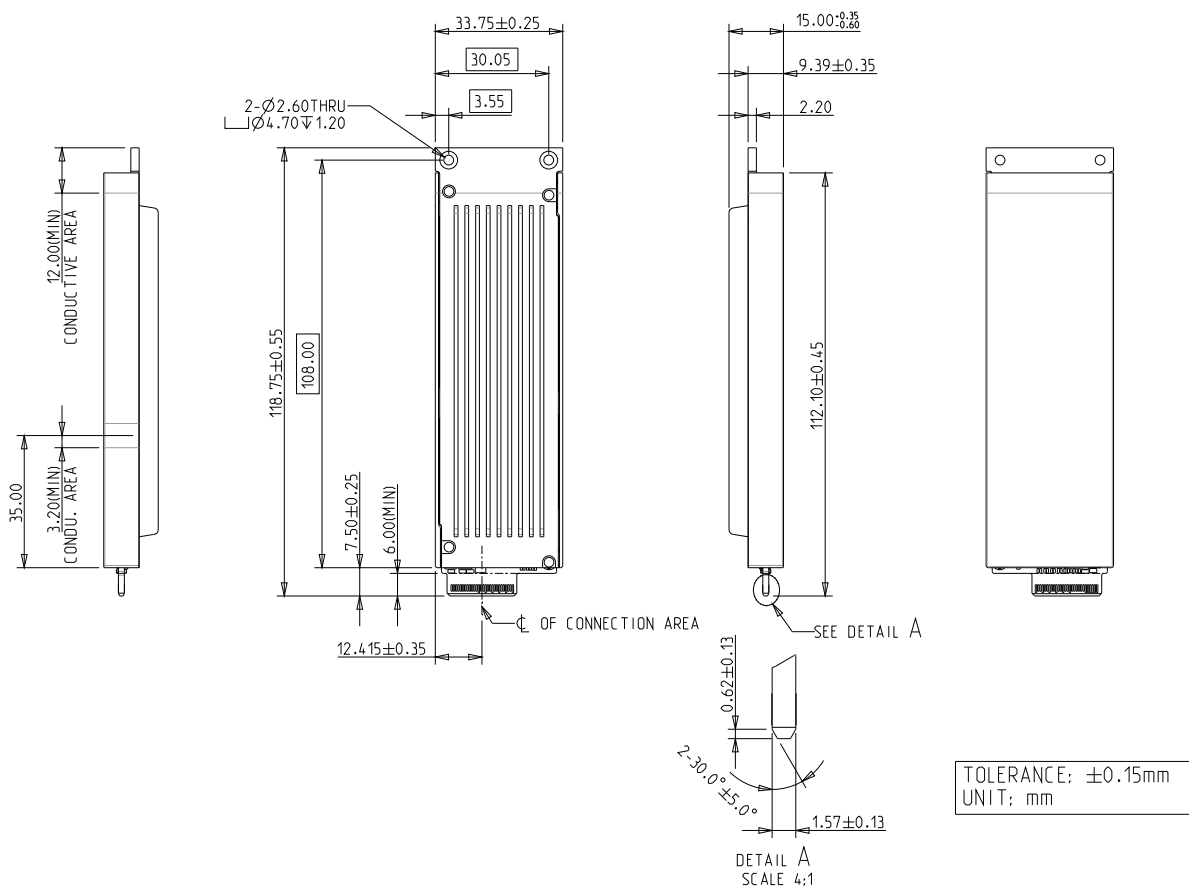


# DIAGRAM

## 9.5mm



## 15mm



## ORDER INFO.

Operating Temperature	Standard Grade (0°C ~ 70°C)	Industrial Grade (-40°C ~ 85°C)
400GB	DSE1S-400DP2KCAEFP%	DSE1S-400DP2KWAEFP%
800GB	DSE1S-800DP2KCAEFP%	DSE1S-800DP2KWAEFP%
1.6TB	DSE1S-1T6DP2KCAEFP%	DSE1S-1T6DP2KWAEFP%
3.2TB	DSE1S-3T2DP2KCAEFP%	DSE1S-3T2DP2KWAEFP%
6.4TB	DSE1S-6T4DP2KCBEP%	DSE1S-6T4DP2KWBEP%

Operation temperature based on temperature obtained from S.M.A.R.T.  
 % : Non-existent=5.9mm / H=9.5mm enclosure / H1=15mm enclosure  
 E1.S 4TS2-P specifications are subject to change.

**HQ (Taiwan)** T +886-2-7703-3000 / E sales@innodisk.com

**CN** T +86-755-2167-3689 / E sales\_cn@innodisk.com

**US** T +1-510-770-9421 / E usasales@innodisk.com

**EU** T +31-40-3045-400 / E eusales@innodisk.com

**JP** T +81-3-6667-0161 / E jp\_sales@innodisk.com

**innodisk**